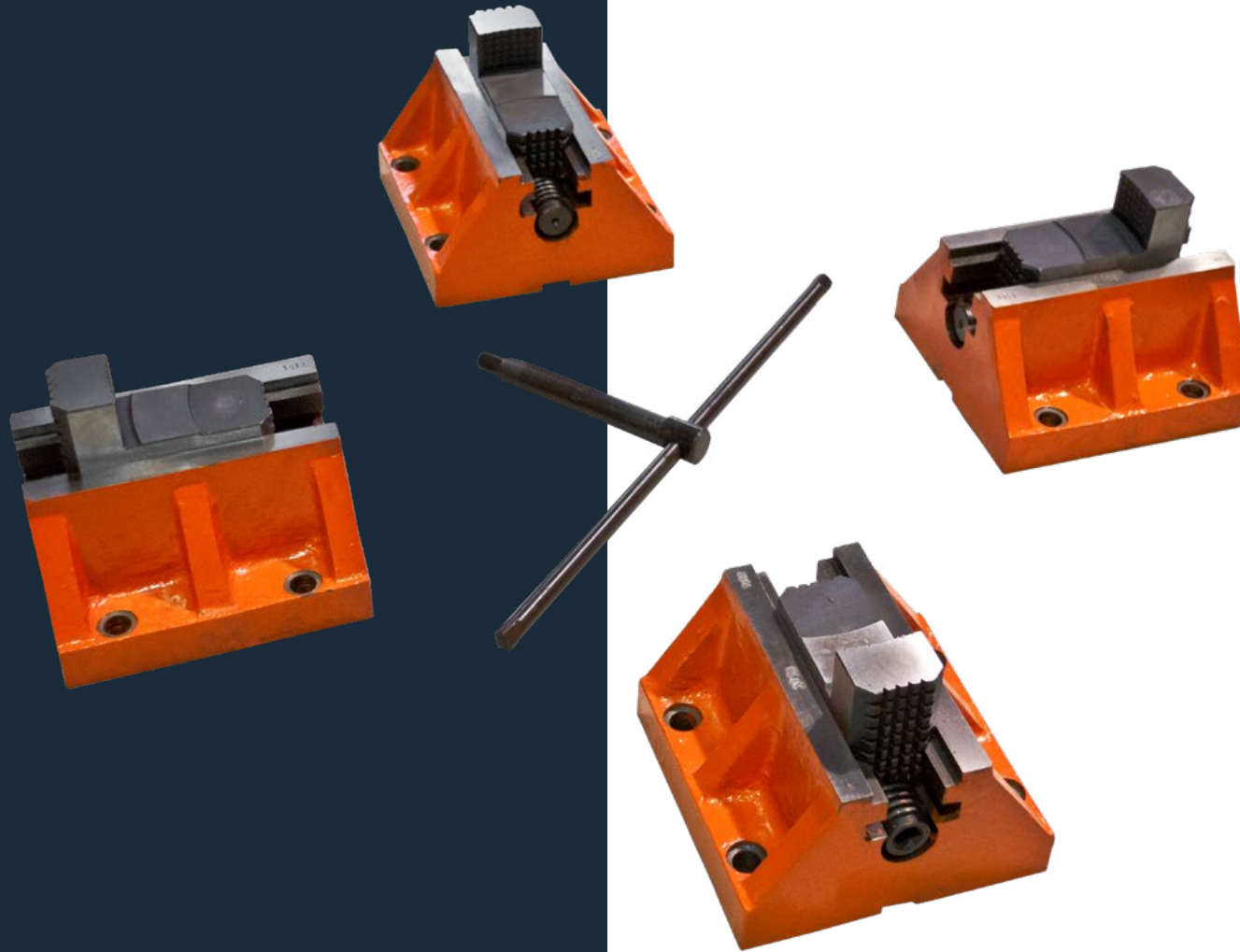


# FACEPLATE JAWS

D-KB



**UMETA**  
fast. safe. easy.



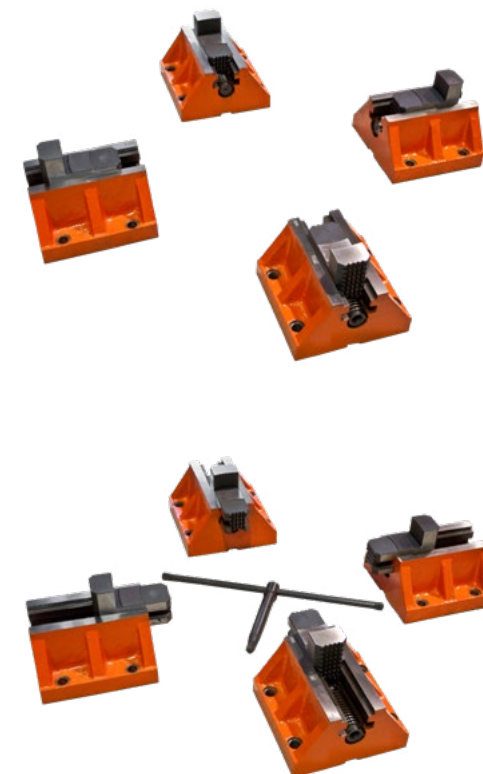
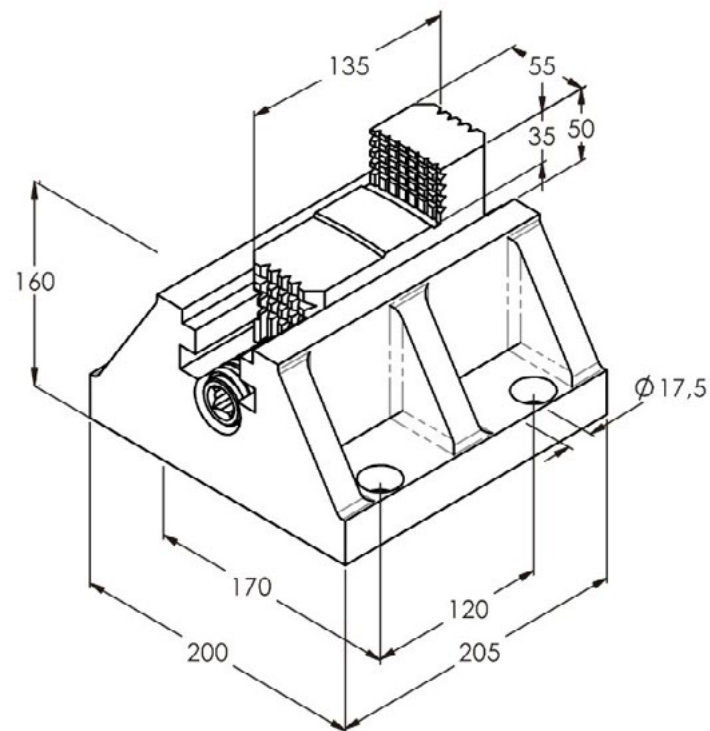
# FACEPLATE JAWS

## D-KB

Designed for clamping big and/or heavy workpieces of every type or shape. The faceplate jaws can be used on several machines such as: welding positioners, vertical lathes, large lathes and more. The clamping force is excellent and the reversible, solid jaws ensure an excellent grip.

### FEATURES

- For heavy duty clamping
- High gripping power and durability
- For clamping irregularly shaped parts
- Reversible, independent, hard, solid jaws



# SUPPORT ROLLERS

*Height elevating*

**D-NHTG / D-ZCJ SERIES**

**UMETA**  
fast. safe. easy.



D-ZCJ-400

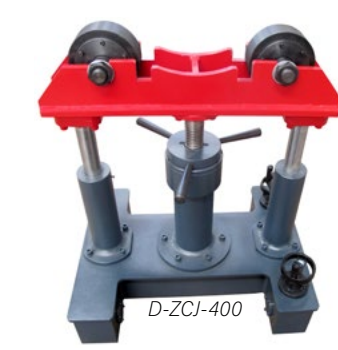


# SUPPORT ROLLERS

Height elevating

## D-NHTG / D-ZCJ SERIES

DUMETA®'s support rollers are primarily used to support workpieces in combination with a welding manipulator or to rotate cylindrical work-pieces by hand



# SUPPORT ROLLERS

Height elevating

**D-NHTG / D-ZCJ**

## Technical specifications

Model	D-NHTG-200	D-NHTG-1000	D-ZCJ-300-PU	D-ZCJ-300	D-ZCJ-400-PU	D-ZCJ-400	D-ZCJ-820
<b>Max. capacity (kg)</b>	200	1.000	2.500	3.000	2.500	5.000	5.000
<b>Work-piece (Ø mm)</b>	30 - 400	30 - 800	260 - 820	260 - 820	100 - 820	100 - 820	50 - 820
<b>Wheels (Ø x B)</b>	75 x 25	60 x 70	150 x 54	150 x 54	150 x 54	150 x 54	300 x 25
<b>Material wheels</b>	Polyurethane	Steel	Polyurethane	Steel	Polyurethane	Steel	Steel
<b>Elevating stroke (mm)</b>	210 - 430	500 - 670	600 - 900	600 - 900	600 - 1.000	600 - 1.000	820 - 1.030
<b>Movable</b>	No	No	Yes	Yes	Yes	Yes	Yes

*All information is subject to printing-, typing errors and modifications.*